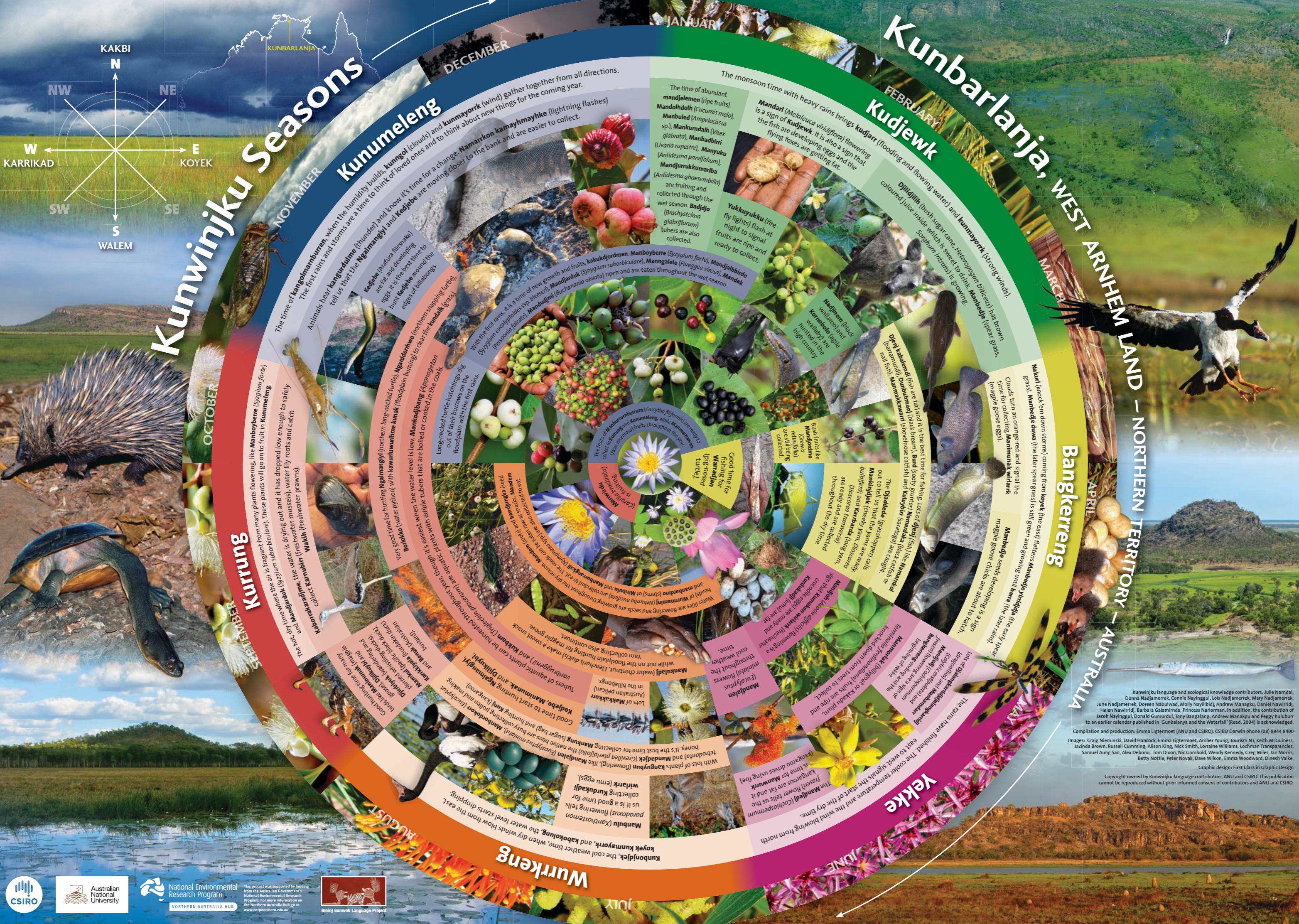
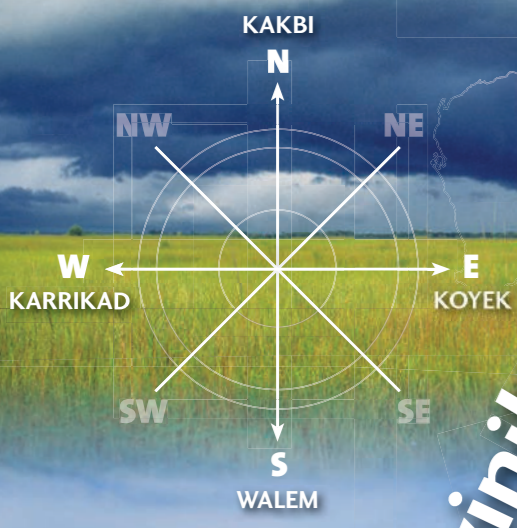


Kunwinjku Seasons



Wurrkeng (August) - The cool weather time, when dry winds blow from the east, kuyek kumayorrk, and kabokaling, the water level starts dropping. Mandulu (Xanthostemon paradoxus) flowering tells us it is a good time for collecting **kurdakadi!** Wilhark (emu eggs). Lots of plants **kangyuna** (flowering), like **Mandajlan** (Eucalyptus minor), **Mandokorr** (Eucalyptus tetrodon) and **Mandajek** (Grevillea pendulifolia) the native bees are busy collecting pollen and making honey. It's the best time for collecting **Mankung** (sugar bag) and hunting **Kungj** (kangaroo).

Kurung (September) - Good hunting time for many birds. **Mamunak** (myrtle) and **Dyhekk** (yellow-billed emu) plumed white-billed ducks and **Kankkale** (Australian bustard) are collected. **Kankkale** (Australian bustard) and **Bemak** (Australian bustard) are collected. **Kakarakadi** (freshwater prawns) and **Mandajek** (freshwater mussels) are collected. **Mankung** (sugar bag) is a good time for collecting **Mankung** (sugar bag) and **Mandajek** (freshwater mussels). These plants will go on to fruit in **Kunumeleng**.

October - The time of **kangolmarburren** when the humidity builds, **kunngol** (clouds) and **kunmayorrk** (wind) gather together from all directions. The first rains and storms are a time to think of loved ones and to think about new things for the coming year. Animals hear **kangardume** (thunder) and know it's time for a change. **Mamarrkon kamaymayhke** (lightning flashes) tell us that the **Ngalmangyi** and **Kedjebe** are moving closer to the bank and are easier to collect. **Kedjebe** (Ararura filesnake) are fat and developing eggs. It is the best time to hunt **Kedjebe** around the edges of bilabongs.

November - Long-necked turtle hatchlings dig out of their burrows on the floodplain with the first rains. **Ngaldemwo** (northern snapping turtle) floodplain burning to clear the floodplain with the first rains. **Ngaldemwo** (northern snapping turtle) floodplain burning to clear the floodplain with the first rains.

December - The fruits of **Mamburumurrum** (*Cosytha filiformis*) are ready to collect in **Manning** and **Kunumeleng**, while **Mamamamayi** (*Ficus racemosa*) fruits throughout the year. **Mandajlan** (pig-roost turtle) is fruiting. **Mandajlan** (pig-roost turtle) is fruiting.

January - The time of abundant **mandjelemen** (ripe fruits), **Mandohdolh** (*Cucumis melo*), **Manbuled** (*Ampelocissus* sp.), **Mankurdalh** (*Vitex glabrata*), **Manbadibiri** (*Uvaria rupestris*), **Manyuku** (*Antidesma parvifolium*), **Mandjurrukkumariba** (*Antidesma ghaesembilla*) are fruiting and collected through the wet season. **Badjijo** (*Brachystelma glaberrimum*) tubers are also collected. **Yukkuyukku** (fire fly lights) flash at night to signal fruits are ripe and ready to collect. **Mandari** (*Melaleuca viridiflora*) flowering is a sign of **Kudjewk**. It is also a sign that the fish are developing eggs and the flying foxes are getting fat.

February - The monsoon time with heavy rains brings **kudjarr** (flooding and flowing water) and **kunmayorrk** (strong winds). **Djilidjilijih** (bush sugar cane - *Areopogon triticeus*) has brown coloured juice inside which is sweet to drink. **Manteegje** (spear grass, *Sorghum intrans*) is growing. **Nadinem** (black wallaroo) and **Kornobola** (sagie wallaby) are hunted in the high country. **Djebi kabaleddi** (fish at sea) and it is the best time for fishing. Lots of **djebi** (fish) like **Namankal** (*Leiostomus xanthurus*), **Djimbubunani** (black bream), **Bud** (sooty grunter) **Namandala** (black whiting) and **Kuybirri** (snappers) are caught. **Mamamamayi** (black whiting) and **Kuybirri** (snappers) are caught. **Natural** (nock em down storms) coming from **koyek** (the east) flattens **Mamandje** (the later spear grass) is still green and growing until **banal** (the later rains). **Mamandje** seeds developing is a sign magpie goose chicks are about to hatch.

March - Clouds turn an orange-red and signal the time for collecting **Mamunak** (willhark) magpie goose eggs. **Mamandje** (the later spear grass) is still green and growing until **banal** (the later rains). **Mamandje** seeds developing is a sign magpie goose chicks are about to hatch.

April - The **Djedede** (grasshopper) calls out to tell us that the yams are ready. **Mandajlan** (pig-roost turtle) is fruiting. **Mandajlan** (pig-roost turtle) is fruiting.

May - The **Djedede** (grasshopper) calls out to tell us that the yams are ready. **Mandajlan** (pig-roost turtle) is fruiting. **Mandajlan** (pig-roost turtle) is fruiting.

June - The **Djedede** (grasshopper) calls out to tell us that the yams are ready. **Mandajlan** (pig-roost turtle) is fruiting. **Mandajlan** (pig-roost turtle) is fruiting.

July - The **Djedede** (grasshopper) calls out to tell us that the yams are ready. **Mandajlan** (pig-roost turtle) is fruiting. **Mandajlan** (pig-roost turtle) is fruiting.

August - The **Djedede** (grasshopper) calls out to tell us that the yams are ready. **Mandajlan** (pig-roost turtle) is fruiting. **Mandajlan** (pig-roost turtle) is fruiting.

September - The **Djedede** (grasshopper) calls out to tell us that the yams are ready. **Mandajlan** (pig-roost turtle) is fruiting. **Mandajlan** (pig-roost turtle) is fruiting.

October - The **Djedede** (grasshopper) calls out to tell us that the yams are ready. **Mandajlan** (pig-roost turtle) is fruiting. **Mandajlan** (pig-roost turtle) is fruiting.

November - The **Djedede** (grasshopper) calls out to tell us that the yams are ready. **Mandajlan** (pig-roost turtle) is fruiting. **Mandajlan** (pig-roost turtle) is fruiting.

December - The **Djedede** (grasshopper) calls out to tell us that the yams are ready. **Mandajlan** (pig-roost turtle) is fruiting. **Mandajlan** (pig-roost turtle) is fruiting.

January - The **Djedede** (grasshopper) calls out to tell us that the yams are ready. **Mandajlan** (pig-roost turtle) is fruiting. **Mandajlan** (pig-roost turtle) is fruiting.

February - The **Djedede** (grasshopper) calls out to tell us that the yams are ready. **Mandajlan** (pig-roost turtle) is fruiting. **Mandajlan** (pig-roost turtle) is fruiting.

March - The **Djedede** (grasshopper) calls out to tell us that the yams are ready. **Mandajlan** (pig-roost turtle) is fruiting. **Mandajlan** (pig-roost turtle) is fruiting.

April - The **Djedede** (grasshopper) calls out to tell us that the yams are ready. **Mandajlan** (pig-roost turtle) is fruiting. **Mandajlan** (pig-roost turtle) is fruiting.

May - The **Djedede** (grasshopper) calls out to tell us that the yams are ready. **Mandajlan** (pig-roost turtle) is fruiting. **Mandajlan** (pig-roost turtle) is fruiting.

June - The **Djedede** (grasshopper) calls out to tell us that the yams are ready. **Mandajlan** (pig-roost turtle) is fruiting. **Mandajlan** (pig-roost turtle) is fruiting.

Kunwinjku language and ecological knowledge contributors: Julie Namdal, Donna Nadjamerrek, Connie Nayinggul, Lois Nadjamerrek, Mary Nadjamerrek, June Nadjamerrek, Doreen Nabulwad, Molly Nayilibidj, Andrew Managku, Daniel Nawirridj, Helen Nawirridj, Barbara Galamirnda, Princess Narlorman. In addition, the contribution of Jacob Nayinggul, Donald Gumurdul, Tony Bangalang, Andrew Managku and Peggy Kuluburr to an earlier calendar published in 'Gunbalanya and the Waterfall' (Read, 2004) is acknowledged.

Compilation and production: Emma Ligtermoet (ANU and CSIRO), CSIRO Darwin phone (08) 8944 8400

Images: Craig Nieminski, David Hancock, Emma Ligtermoet, Amber Young, Tourism NT, Keith McGuinness, Jacinda Brown, Russell Cumming, Alison King, Nick Smith, Lorraine Williams, Lochman Transparencies, Samuel Aun Sang, Alex Debono, Tom Dixon, Nic Gambold, Wendy Kennedy, Greg Miles, Ian Morris, Betty Nottle, Peter Novak, Dave Wilson, Emma Woodward, Dinesh Valke.

Graphic design: First Class in Graphic Design

Copyright owned by Kunwinjku language contributors, ANU and CSIRO. This publication cannot be reproduced without prior informed consent of contributors and ANU and CSIRO.